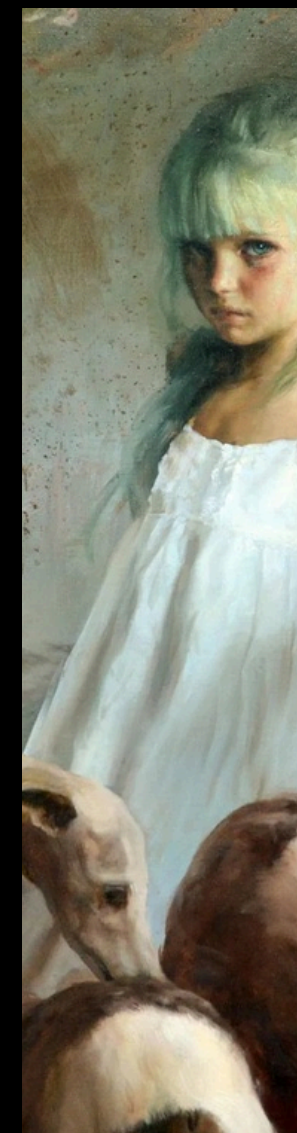




# ENSUEÑO

GUILLERMO LORCA - PAINTER





# FASHION FILM

Highly stylized and curated fashion film in three parts, inspired by the dreamlike surrealism of Guillermo Lorca's paintings.

Shot in Barcelona in August, no Oscar winning story but visually impressive, short and enticing.

The project will premiere on NOWNESS and screen at selected fashion festivals.



INT. GUILLERMO'S LIVING ROOM – DAY

A flash is fired, sharply revealing GUILLERMO LORCA seated centrally in front of a vibrant, chaotic painting.

[Medium Close-Up, Center Frame]

Guillermo maintains direct eye contact with the camera, expression intense yet neutral. Camera tracks backward, revealing a meticulously chaotic setup: cameras, tripods, vibrant fabrics cascading from walls, unfinished and completed canvases scattered about, lending depth and visual complexity.

A MAKEUP ARTIST, dark-skinned and precise, gently applies finishing touches of powder. Guillermo remains statue-like. A PHOTOGRAPHER dressed entirely in black circles Guillermo, seeking perfect angles. A STYLIST adjusts Guillermo's lavishly colorful outfit.

Ambient audio builds steadily: camera shutters clicking, muted chatter, footsteps, fabric rustling, flashes popping.

An ASSISTANT briskly crosses frame, momentarily obscuring the shot as the camera continues its retreat, emphasizing Guillermo's stillness amidst creative chaos.



# PHOTO SHOOT

*"En relación a cómo me veo a mi mismo, no estoy seguro, la imagen que se tiene de uno mismo tiende a estar bastante distorsionada por múltiples factores. Con respecto a la pregunta de cómo me gustaría que me vieran, espero que me vean como alguien auténtico en relación a su arte y, de hecho, siento que es así."*

*more direct*



# LOCATION SCOUT

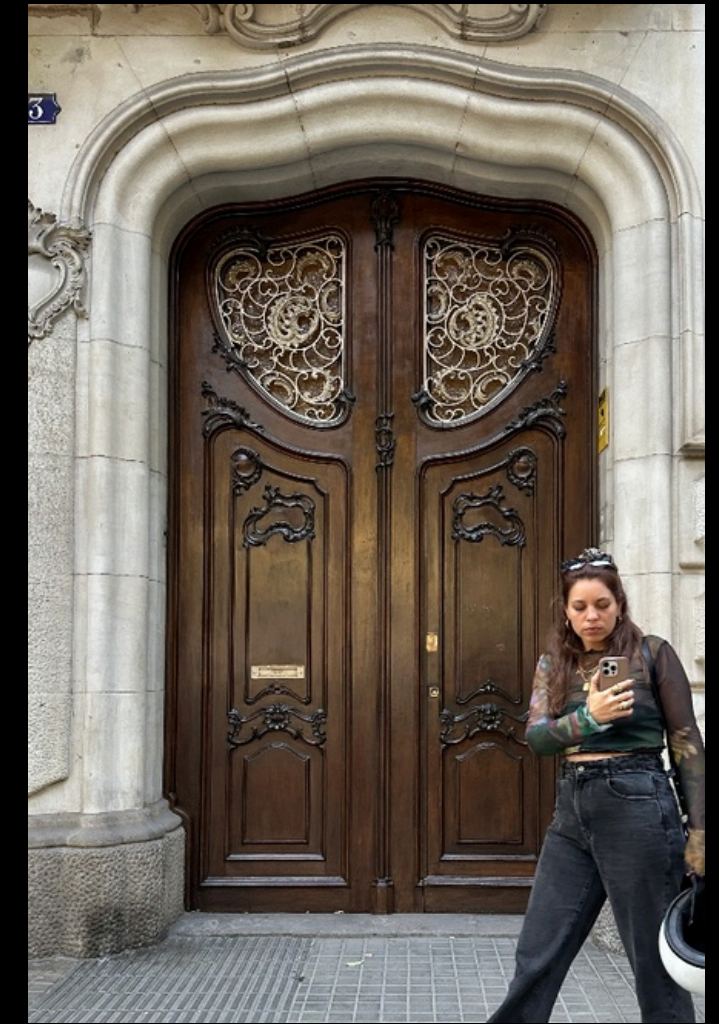


WINDOW IN APARTMENT

KITCHEN



MAIN DOOR



ELEVATOR



BED ANGLE



LIVING ROOM



CORRIDOR





*"Un sentimiento difícil de describir, tal vez algo similar a lo que asociamos con "la magia" de la infancia. Hay muchas otras sensaciones en las cuales las palabras no son un canal adecuado para expresarnos."*

# AWAKENING



INT. GUILLERMO'S BEDROOM - MORNING

[Cenital Shot]

Guillermo lies on dark sheets, suddenly splashed awake by white milk cascading onto his body. He jolts awake, eyes wide with shock.

Rapid montage ensues, intense and surreal:

- Fragmented imagery from his paintings: feral animals, ethereal girls, intricate eyes, flowing hair, cascading drapery.
- Close-ups of paintbrushes, nature elements, macro, textured strokes vivid and sensual.
- Rough, distorted camera movements. Long exposures blur into abstract visions.
- Guillermo, disoriented, staggers through a shadowy corridor, flashing in and out of reality.

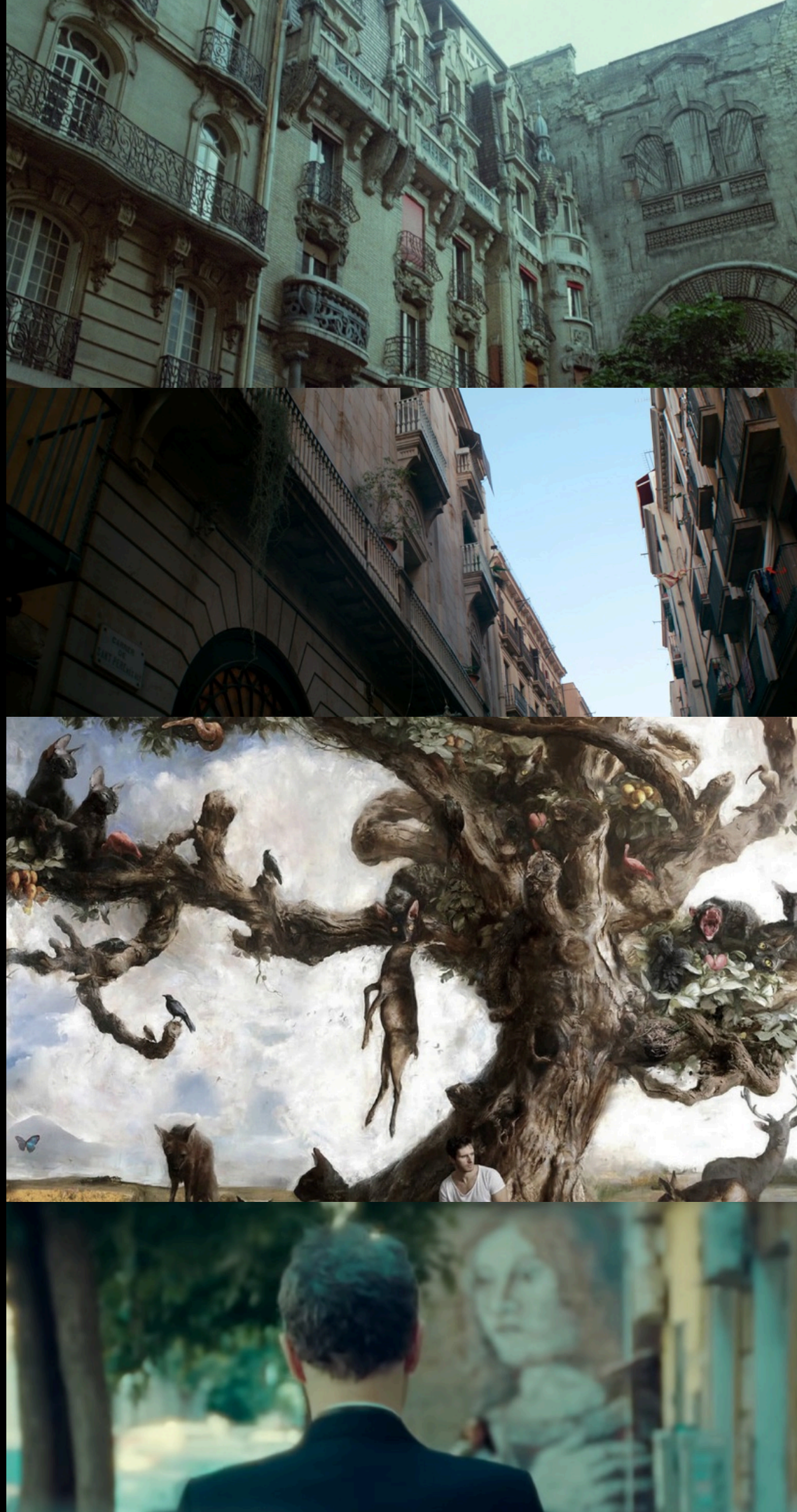
The mood intensifies, the boundary between dream and reality dissolves.

CLIMAX: TBC 😊

Reference Mood: Darren Aronofsky's visual intensity (Requiem for a Dream), combined with abstract painting aesthetics.



# ESCAPE



## EXT. ORNATE DOOR / BARCELONA STREETS – DAY

The large ornate wooden door slowly opens. Guillermo steps out onto the street, emerging confidently but quickly becoming mesmerized and uncertain, as reality gently blurs into a dreamlike state.

Barcelona is simultaneously recognizable and fantastical:

- Streets appear familiar yet subtly distorted, architecture melting into organic shapes reminiscent of Guillermo's paintings.
- Plants, branches, and shadows weave into surreal animal forms, moving softly and fluidly alongside him.
- Ordinary city elements morph unexpectedly—a mailbox sprouts bird wings, graffiti shifts into living creatures, storefront reflections ripple like water.

Guillermo reacts with a mixture of wonder and uncertainty, cautiously exploring this transformed cityscape, frequently pausing as surreal sights captivate him.

The camera moves lyrically, shifting seamlessly from Guillermo's perspective to wider, dream-like framings. AI-generated visuals merge with actual Barcelona landmarks, creating an atmosphere of captivating uncertainty.

Ambient sounds shift between real and surreal—city noises interspersed with distant echoes of nature, whispers, and the soft breathing of living architecture.

**MUSIC DIRECTION:** Atmospheric, gentle, subtly surreal; an immersive soundscape blending acoustic elements with ethereal digital textures.

**Reference Mood:** Problemista's surreal urban exploration meets Guillermo del Toro's rich imaginative detail, merging reality with fantastical elements.